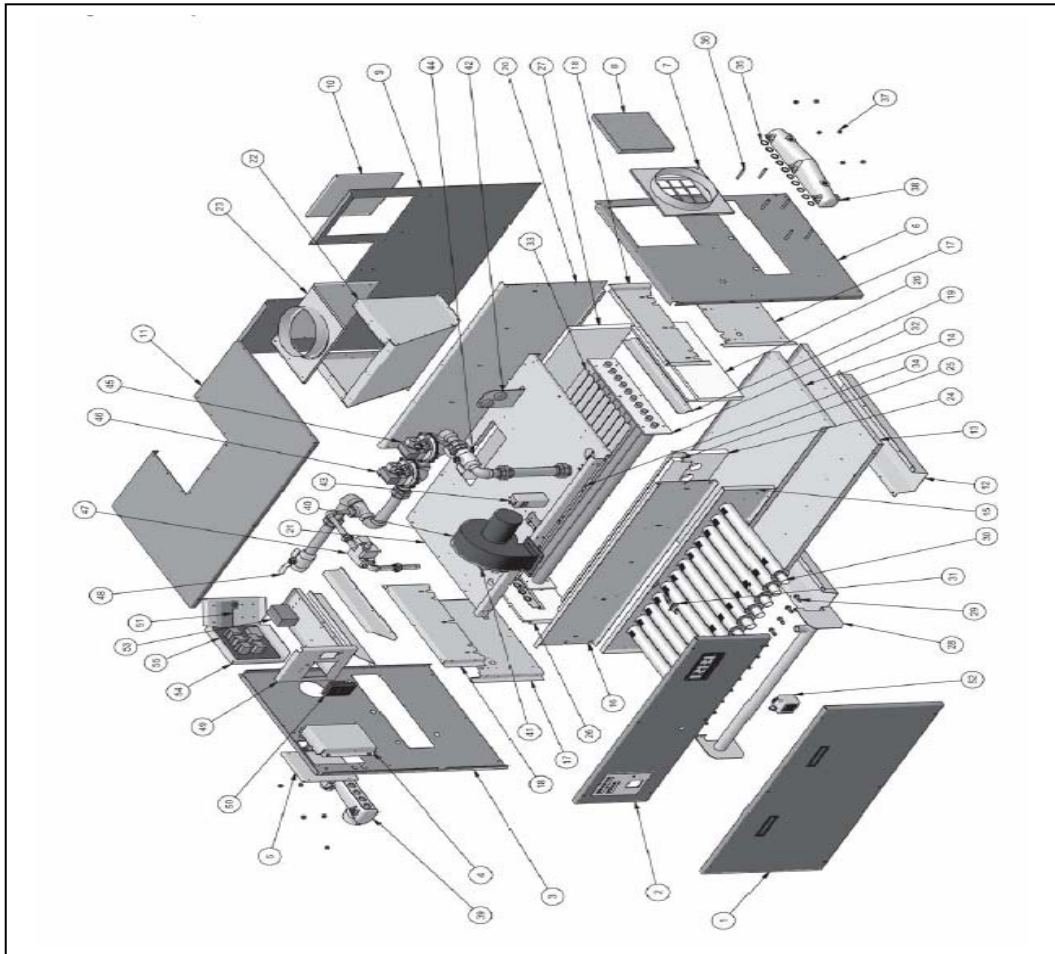


# RBI Dominator

<b>To:</b> PARTS SPECIALIST	<b>From:</b>
<b>Fax:</b> 216-587-0008	<b>Phone:</b>
<b>Phone:</b> 216-587-0005	<b>Fax:</b>
<b>Re:</b> PARTS PRICING REQUEST	<b>Company:</b>

PLEASE CIRCLE THE PART(S) NEEDED BELOW AND INDICATE THE QUANTITY NEEDED. PRINT AND FAX. YOU MAY REVIEW THE PART DESCRIPTION ON THE FOLLOWING PAGES. OUR INSIDE SUPPORT TEAM WILL RESPOND TO YOUR REQUEST WITHIN 24 HOURS OF RECEIPT.



NOTES OR SPECIAL INSTRUCTIONS:

---











ROBERTS MECHANICAL EQUIPMENT COMPANY 216-587-0005

Ref #	Name of Part	Part #	300	400	600	750	900	1050	1350	1500	1950	2100
39	Inlet/Outlet Header, Bronze	01-0019S	1	1	1	1	1	1	1	1	1	1
	Inlet/Outlet Header, Cast Iron	01-0023S	1	1	1	1	1	1	1	1	1	1
40	Blower, Fasco 70625413	12-0013	1	1	1							
	Blower, Fasco 70830370	12-0014				1	1	2	2	2	2	2
41	Combustion Air Damper Assembly	70-2818	1	1	1							
		70-2819				1	1	2	2	2	2	2
42	Low Pressure Switch	14-0061	1	1	1	1	1	2	2	2	2	2
	High Pressure Switch	14-0059	1	1	1	1	1	2	2	2	2	2
43	High Limit L4008E1305 (LB)	14-0112	1	1	1	1	1	1	1	1	1	1
	High Limit L4008E1313 (LW)	14-0105	1	1	1	1	1	1	1	1	1	1
NS	NG STD/FM Gas Train Assembly	73-0701	1									
		73-0702		1								
		73-0703			1							
		73-0704				1						
		73-0705					1					
		73-0706						1				
		73-0707							1			
		73-0708								1		
		73-0709									1	
		73-0710										1
NS	LP STD/FM Gas Train Assembly	73-0741	1									
		73-0742		1								
		73-0743			1							
		73-0744				1						
		73-0745					1					
		73-0746						1				
		73-0747							1			
		73-0748								1		
		73-0749									1	
		73-0750										1
44	Firing Valve, 3/4"	11-0461	1	1								
	Firing Valve, 1"	11-0456			1	1	1	2	2	2	2	
	Firing Valve, 1 1/4"	11-0457										2
NS	Manual Pilot Valve	11-0031	1	1	1	1	1	1	1	1	1	1
45	Main Gas Valve, VR8305	11-0087	1	1								
	Main Gas Valve, V8944B, 1"	11-0186			1	1	1	2	2	2	2	
	Main Gas Valve, V8944B, 1 1/4"	11-0187										2
46	Safety Valve, V48A, 1"	11-0151			1	1	1					
	Safety Valve, V48A, 1 1/4"	11-0152						1	1	1		
	Safety Valve, V48A, 1 1/2"	11-0153									1	1
47	Pilot Valve, VR8205	11-0086	1	1	1	1	1	1	1	1	1	1
48	Manual Shut Off Valve, 1"	11-0456			1	1	1					
	Manual Shut Off Valve, 1 1/4"	11-0457						1	1	1		
	Manual Shut Off Valve, 1 1/2"	11-0458									1	1
49	Control Panel Assembly, 2 Stage	70-2806	1	1	1	1	1					
	Control Panel Assembly, 4 Stage	70-2807						1	1	1	1	1
	Control Panel Assembly, 2 Stage, CSD-1	70-2808	1	1	1	1	1					
	Control Panel Assembly, 4 Stage, CSD-1	70-2809						1	1	1	1	1
50	BTC Staging Control, 2 Stage	14-0306	1	1	1	1	1					
	BTC Staging Control, 4 Stage	14-0307						1	1	1	1	1
NS	Tekmar 071 temperature sensor	14-0308	2	2	2	2	2	2	2	2	2	2
	Tekmar 080 Universal Sensor Enclosure	14-0309	2	2	2	2	2	2	2	2	2	2
NS	Timer Board	40-0059	1	1	1	1	1	1	1	1	1	1
NS	2 Stage LED Indicator Board	40-0057	1	1	1	1	1	1	1	1	1	1
NS	4 Stage LED Indicator Board	40-0058						1	1	1	1	1
51	Flame Sensor UTC 1003-61A Ignition Module	16-0059	1	1	1	1	1	1	1	1	1	1
52	Q652B1006, Spark Generator	16-0008	1	1	1	1	1	1	1	1	1	1
NS	Ignition Cable Assembly	40-0261	1	1	1	1	1	1	1	1	1	1
53	Transformer, 50 VA	15-0007	1	1	1	1	1					
	Transformer, 75 VA	15-0008						1	1	1	1	1

