

ALL PRICES F.O.B. TULSA, OK  
AND SUBJECT TO CHANGE WITHOUT NOTICE

EFFECTIVE MAY 1, 2003  
SECTION 7 - PAGE 14

PB - 1



## FRONTPLATE DIMENSIONAL DATA FORM

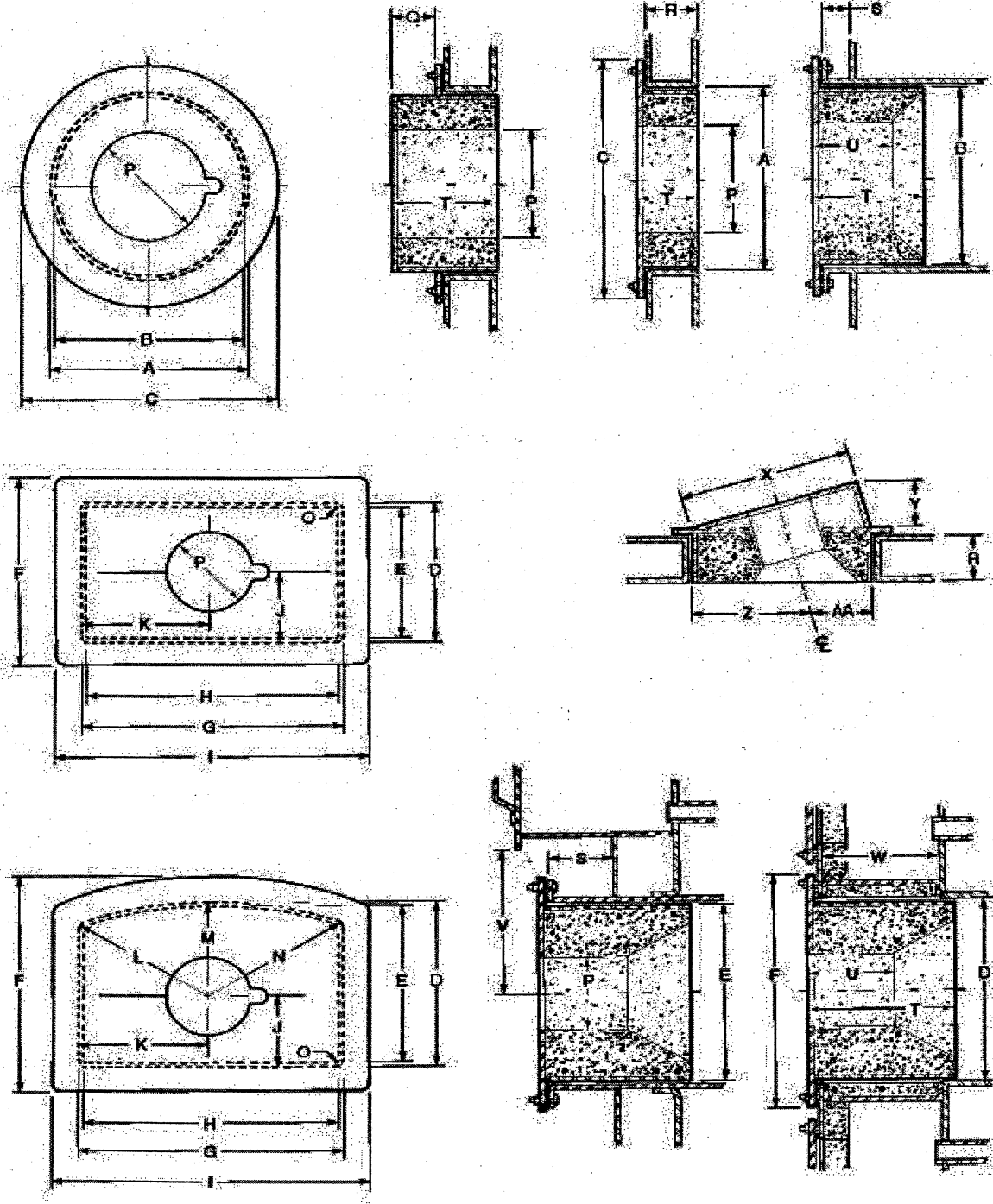
<b>COMPANY NAME:</b> _____ _____ <b>JOB NAME:</b> _____ _____ _____	<b>S.O. NO.</b> <b>CUSTOMER ID</b> <b>CUSTOMER ORDER #</b> <b>REQUIRED DATE</b> <b>SCHEDULED DATE</b> <b>TERRITORY</b>
---	---

**UNIT FRONTPLATE DATA:**

<b>I. BURNER TO BE FIRED - MODEL NO.</b>	
<b>II. FRONTPLATE TYPE:</b> <input type="radio"/> REFRACTORY <input type="radio"/> REFLECTOR <input type="radio"/> ANGLE	
<b>III. CIRCULAR FRONTPLATE (CFP) DIMENSION DATA:</b>	
A - FIRE TUBE ID	A.
B - CFP - REFRACTORY O.D. (STD = A-1")	B. *
C - CFP-OUTSIDE DIA. FLANGE O.D. (STD = B + 3")	C. *
<b>IV. RECTANGULAR/SQUARE FRONTPLATE (R/S FP) DIMENSION DATA:</b>	
D - FIREDOOR I.D. HEIGHT	D.
E - R/S FP - REFRACTORY O.D. HEIGHT (STD = D - 1")	E. *
F - R/S FP - OUTSIDE FLANGE O.D. HEIGHT (STD = D + 3")	F. *
G - FIRE DOOR I.D. WIDTH	G.
H - R/S FP - REFRACTORY O.D. WIDTH (STD = D - 1")	H. *
I - R/S FP - OUTSIDE FLANGE O.D. WIDTH (STD = G + 3")	I. *
J - R/S FP - C/L BURNER OPENING TO FIREDOOR OPENING HT.	J.
K - R/S FP - C/L BURNER OPENING TO FIREDOOR OPENING WD.	K.
L - R/S FP - C/L BURNER OPENING TO FIREDOOR LT. CORNER	L.
M - R/S FP - C/L BURNER OPENING TO FIREDOOR CENTER TOP	M.
N - R/S FP - C/L BURNER OPENING TO FIREDOOR RT. CORNER	N.
O - R/S FP - CORNER RADIUS	O.
P - BURNER HEAD OPENING (STD = BURNER HEAD DIA. + 1")	P.
Q - INVERTED FRONTPLATE EXTENSION	Q.
R - MUD LEG DEPTH	R.
S - FIRETUBE EXTENSION	S.
T - REFRACTORY DEPTH **/**	T.
U - BURNER HEAD LENGTH (STD = 5-1/2")	U. *
V - C/L BURNER OPENING TO SMOKE BOX	V.
W - SMOKE BOX TURN AROUND	W.
X - R/S FP - ANGLE WIDTH	X.
Y - R/S FP - ANGLE DEPTH	Y.
Z - R/S FP - ANGLE C/L BURNER OPENING LT.	Z.
AA - R/S FP - ANGLE C/L BURNER OPENING RT.	AA.
BB - ANGLE DOOR FIRING <input type="radio"/> UP <input type="radio"/> DOWN <input type="radio"/> RIGHT <input type="radio"/> LEFT	BB.

**NOTES:**

- \* THESE DIMENSIONS WILL BE PROVIDED AS SHOWN, IF NO DIMENSION IS FILLED IN.
- \*\* REFRACTORY ON SCOTCH MARINE BOILERS MUST EXTEND 2" BEYOND TUBE SHEET INTO MORRISON TUBE.
- \*\*\* REFRACTORY WIDTH REQUIREMENT MINIMUM 2".



ALL PRICES F.O.B. TULSA, OK  
AND SUBJECT TO CHANGE WITHOUT NOTICE

EFFECTIVE MAY 1, 2003  
SECTION 7 - PAGE 15