

# STANDARD CIRCULATORS

# ARMSTRONG®

## SERIES "S"

FILE NO:	10.50
DATE:	Dec. 16, 1991
SUPERSEDES:	10.50
DATE:	June 30, 1991
SUPERSEDES:	10.90 (CAN.)
DATE:	April 15, 1973

## SUBMITTAL

JOB/PROJECT: _____	REPRESENTATIVE _____
_____	_____
_____	_____
ENGINEER: _____	ORDER NO: _____ DATE: _____
CONTRACTOR: _____	SUBMITTED BY: _____ DATE: _____
	APPROVED BY: _____ DATE: _____

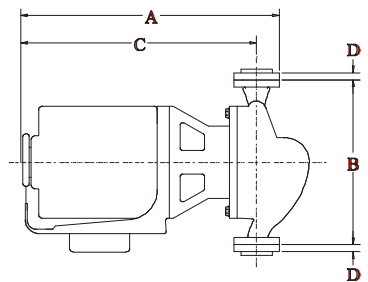
PUMP DESIGN DATA	
PUMP MODEL:	FLANGE SIZE:
NO OF PUMPS:	
NOTE:	
CAPACITY: USgpm (l/s)	HEAD: ft. (m)
LIQUID: WATER	TEMPERATURE: °F (°C)
COMPANION FLANGES:	INCLUDED (EXCEPT MODELS S-25 & S-45)

MAXIMUM WORKING PRESSURE:	125 PSI (863 kPa)
MAXIMUM OPERATING TEMPERATURE:	225°F (107° C)

OPTIONAL EQUIPMENT

MATERIALS OF CONSTRUCTION		
PART NAME	BRONZE FITTED	ALL BRONZE
Pump Body	Cast Iron	Bronze
Impeller	S-25, S-35	Non-Ferrous
	S-45 to S-69	Non-Ferrous
Bearings	Sleeve-Oil Lubricated	Sleeve-Oil Lubricated
Shaft	Alloy Steel-Copper Sleeve	Alloy Steel-Copper Sleeve
Seal	ARMSEAL Mechanical	ARMSEAL Mechanical
Stationary Seal Face	ARMSEAL Ceramic	ARMSEAL Ceramic
Coupler	S-25 to S-46 Flexible, 4- Spring S-55 to S-69 Flexible, Spacer Type	
Motor	Single Phase - 1800 RPM - Resilient Mounted Three Phase - 1800 RPM - Resilient Mounted	

DIMENSIONAL DATA								
MODEL	FLANGE SIZE (N.P.T.)	MOTOR *		DIMENSIONS inches (mm)				SHPG WEIGHT lbs (kg)
		H.P.	PHASE & VOLT	A	B	C	D	
S-25	3/4 1	1/12 1/12	1 Phase 115 volt	13-3/4 (349)	6-1/2 (165)	11-1/2 (292)	3/4 (19)	20 (9)
				13-3/4 (349)	6-1/2 (165)	11-1/2 (292)	3/4 (19)	20 (9)
				13-3/4 (349)	6-1/2 (165)	11-1/2 (292)	7/8 (22)	20 (9)
				13-3/4 (349)	6-1/2 (165)	11-1/2 (292)	7/8 (22)	20 (9)
S-35	2	1/6		15 (381)	8-1/2 (216)	12-1/2 (318)	7/8 (22)	35 (16)
S-45	2-1/2 3	1/4 1/4		15-3/4 (400)	10 (254)	12-1/2 (318)	1 (25)	51 (23)
				15-3/4 (400)	10 (254)	12-1/2 (318)	1 (25)	51 (23)
S-46	3	1/3		15-3/4 (400)	10 (254)	12-1/2 (318)	1 (25)	51 (23)
S-55	3	1/2	1 Phase 115/230 volt	19-1/2 (495)	12 (305)	16 (406)	1 (25)	82 (37)
S-57	3	3/4	or 3 Phase 208-230/	20 (508)	12 (305)	16-1/2 (419)	1 (25)	85 (39)
S-69	3	1	460 or 575 volt	25 (635)	14-1/4 (362)	20-1/4 (514)	1 (25)	135 (61)



Resilient Mount

Dimensions shown are for reference only.

\* All single phase motors are equipped with a built-in thermal overload protection.  
Three phase motors require external overload protection.