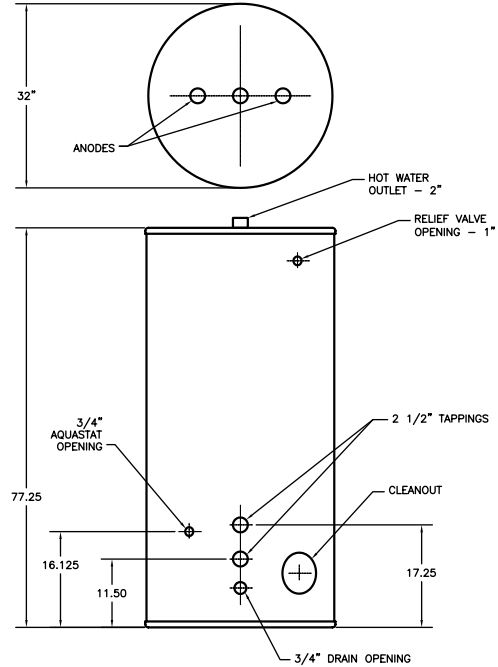
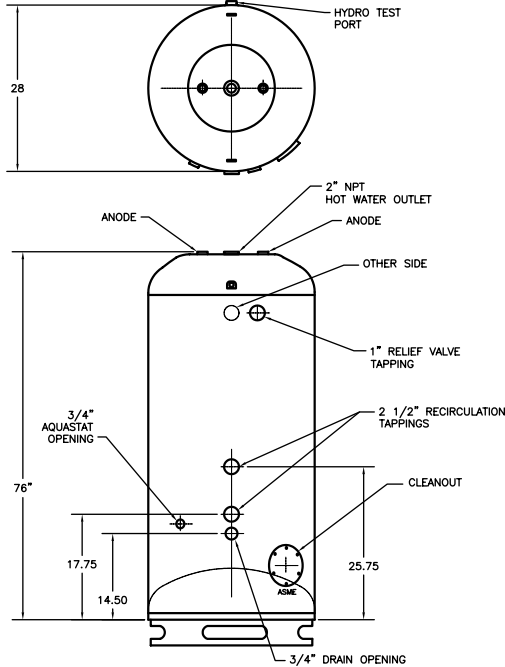




SUBMITTAL SHEET

Type: Vertical Glass Lined Storage Tanks
Models: 200 Gallon Bare and Jacketed



NOTE: Tanks shown are rated for 150 M.A.W.P.

Specification for RBI Storage Tank

The STORAGE TANK shall be a RBI, Model V200B/J with vertical construction and having a storage capacity of 200 gallons. The tank shall be constructed with an inner chamber baffle designed to receive all circulation to and from the water heater to eliminate turbulence in the tank.

The STORAGE TANK shall be constructed in accordance with (Standard) (ASME Boiler and Pressure Vessel Code) requirements, (if ASME – stamped and registered with the National Board of Boiler and Pressure Vessel Inspectors). The tank shall be furnished with the following connections, two 2 1/2" NPT circulating connections, one 2" NPT hot water outlet, one 1" NPT relief valve connection, one 3/4" NPT aquastat opening, and one 3/4" NPT drain connection.

The STORAGE TANK shall have a working pressure of 150 PSI. The interior of the STORAGE TANK shall be (glass lined and fired to 1600°F to ensure a molecular fusing of glass and steel, furnished with magnesium anodes and carry a five (5) year limited warranty).

The RBI Tank shall be constructed with a heavy gauge steel jacket assembly, primed and pre-painted on both sides with a minimum dry film thickness of 0.70 mills. The jacket and tank base shall be a watertight construction with a built-in drain pan, complete with a 3/4" drain connection to assist in protecting against damage in the event of a tank or component leakage. The STORAGE TANK shall be completely encased in a minimum of 2" thick, high-density polyurethane foam insulation to meet the efficiency requirements of the latest edition of the ASHRAE 90.1 Standard. The entire tank assembly shall be mounted on channel steel skids to facilitate handling and installation.

The jacket dimension shall be _____ " wide, _____ " deep and _____ " high.

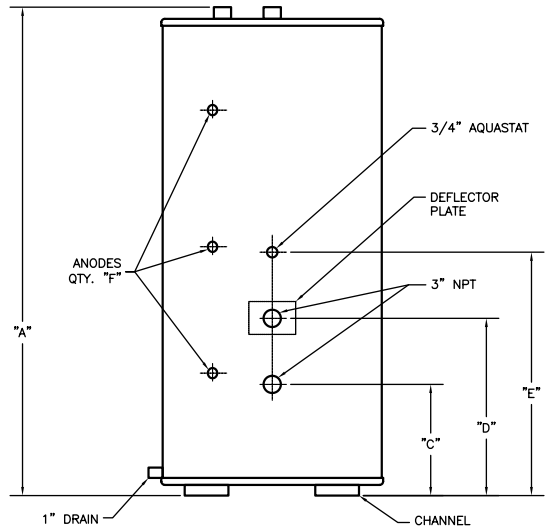
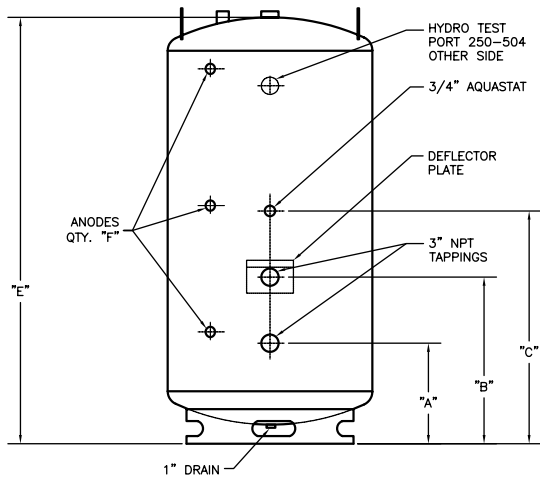
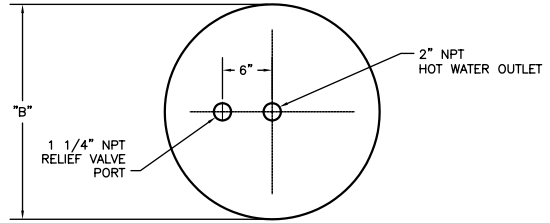
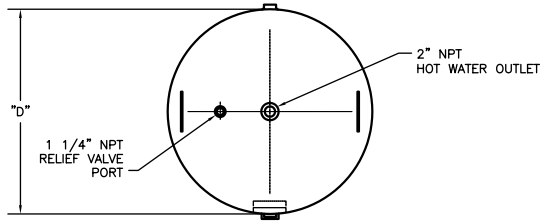


260 North Elm Street • Westfield, MA 01085
 Phone: (413) 568-9571 • Fax: (413) 568-9613
 1300 Midway Blvd. • Mississauga, ONT. L5T 2G8
 Phone: (905) 670-5888 • Fax: (905) 670-5782



SUBMITTAL SHEET

Type: Vertical Glass Lined Storage Tanks
Models: 250-940 Gallon Bare and Jacketed



MODEL	"A"	"B"	"C"	"D"	"E"	"F"
V250B	15.75	23.75	31.75	30"	88"	3
V320B	17.50	25.50	33.50	36"	76"	3
V430B	18.75	26.75	34.75	42"	76"	3
V500B	18.75	26.75	34.75	42"	88"	3
V750B	20.75	28.75	36.75	48"	100"	4
V940B	20.75	28.75	36.75	48"	124"	4

NOTE:
Tanks shown are rated for 125 M.A.W.P.

MODEL	"A"	"B"	"C"	"D"	"E"	"F"
V250J	92"	34"	18"	26"	34"	3
V320J	82"	40"	19.5	27.5	35.5	3
V430J	82"	46"	21"	29"	37"	3
V500J	92"	46"	21"	29"	37"	3
V750J	105"	54.5	23.5	31.5	39.5	4
V940J	129"	54.5	23.5	31.5	39.5	4

Specification for RBI Storage Tank

The STORAGE TANK shall be a RBI, Model _____ with vertical construction and having a storage capacity of _____ gallons. The tank shall be constructed with an inner chamber baffle designed to receive all circulation to and from the water heater to eliminate turbulence in the tank.

The STORAGE TANK shall be constructed in accordance with (Standard) (ASME Boiler and Pressure Vessel Code) requirements, (if ASME – stamped and registered with the National Board of Boiler and Pressure Vessel Inspectors). The tank shall be furnished with the following connections, two 3" NPT circulating connections, one 2" NPT hot water outlet, one 1 1/4" NPT relief valve connection, one 3/4" NPT aquastat opening, and one 1" NPT drain connection. STORAGE TANKS of 750 gallons and larger shall be furnished with a manhole for ease of inspection, cleanout and service.

The STORAGE TANK shall have a working pressure of 125 PSI (150 PSI optional). The interior of the STORAGE TANK shall be (glass lined and fired to 1600°F to ensure a molecular fusing of glass and steel, furnished with magnesium anodes and carry a five (5) year limited warranty).

The RBI Tank shall be constructed with a heavy gauge steel jacket assembly, primed and pre-painted on both sides with a minimum dry film thickness of 0.70 mills. The jacket and tank base shall be a watertight construction with a built-in drain pan, complete with a 1" drain connection to assist in protecting against damage in the event of a tank or component leakage. The STORAGE TANK shall be completely encased in a minimum of 2" thick, high-density polyurethane foam insulation to meet the efficiency requirements of the latest edition of the ASHRAE 90.1 Standard. The entire tank assembly shall be mounted on channel steel skids to facilitate handling and installation.

The jacket dimension shall be _____ " wide, _____ " deep and _____ " high